



# PENN STATE LAW

---

LL.M.Program



**W**elcome to Penn State Law! For more than four decades we have been training lawyers for the global market place. Our LL.M. program is designed to train students to think, communicate, and practice as international legal experts with the confidence to practice anywhere in the world.

We've provided a snapshot of the road ahead for you at Penn State Law. We hope that you will become a part of our community.

## *Calendar Overview*

### **PRE-ARRIVAL**

- Background reading in U.S. law
- Course selection and registration
- Bar exam document preparation (optional)
- Housing arrangements

### **JULY - EARLY AUGUST**

- Legal English communication course (optional)
- Introduction to the U.S. Legal Systems
- Plan for following summer internship (optional)

### **AUGUST - DECEMBER**

- Four to five courses that may include specialty areas like antitrust, M&A or international business transactions; core courses like legal analysis, writing and research; and cross disciplinary courses with other Penn State graduate programs.
- Involvement in student organizations, journals, and moot court competitions

### **JANUARY - MAY**

- Optional January admission start date
- Four to five courses (as above)
- Involvement in student organizations, journals, and moot court competitions
- Apply for practical training (optional)
- Graduation

### **MAY - JULY (optional)**

- Internship
- Bar preparation (commercial class)

### **AUGUST - DECEMBER (optional)**

- Additional course work/preparation for U.S. Bar (three-semester program)

## LL.M. PROGRAM AT-A-GLANCE

*Your Experience at Penn State Law*



### Flexible Curriculum

The ability to enroll in a variety of courses tailored to your career goals

### Specialized Fields of Study

The ability to concentrate in a specialized area



### Legal English

Intensive legal English communication skills training

### Faculty Scholars

A diverse and accomplished group of scholars and teachers



### Mentoring

LL.M. students are paired with J.D. students who become mentors

### Alumni

Access to the largest dues-paying alumni organization in the world



### Bar Preparation

Expert counseling and preparation to take a U.S. state bar exam

### Technology

The ability to connect to programs and speakers anywhere in the world



### Interdisciplinary/International Affairs

Collaboration and study with other Penn State graduate schools, including the School of International Affairs

### Applications

Reviewed on an ongoing basis



### Scholarships

Merit-based scholarships awarded to outstanding applicants

### Safe Community

A diverse and safe community home to thousands of U.S. and international students



## FLEXIBLE CURRICULUM

### THE PROGRAM OF STUDY

The master of laws program is a 24-credit, one academic year course of study open to individuals who hold a degree in law from an accredited institution outside of the U.S. Our experienced faculty members work with LL.M. students to develop a course of study that supports their individual career goals. LL.M. students can enroll in any course available to Penn State J.D. students and share classes with them.

### THE CURRICULUM

Our rich curriculum affords LL.M. candidates the opportunity to enroll in a variety of diverse courses or to concentrate their studies in any one of the specialized fields of study. LL.M. students are not required to select a specialized field of study. The specialized fields simply illustrate the possible areas of law that students can focus on and help them get to know our renowned faculty members by areas of their expertise.



“First the Penn State name is well-known, but also I can get what I want — an LL.M. focused in M&A — because I am able to tailor the program to my exact needs and will do research within the Center for the Study of Mergers and Acquisitions.” — Allan Binns ’12  
Panama



# SPECIALIZED FIELDS OF STUDY



## PRIMARY FOCUS AREAS:

### ARBITRATION, MEDIATION AND NEGOTIATION

It is no longer sufficient for a modern lawyer to know only traditional judicial procedures. Modern lawyers must also represent their clients in negotiation, mediation, administrative adjudication, rule-making, and arbitration.

### BUSINESS LAW

Business law courses offer students an opportunity to explore the legal environment of business. Intermediate and advanced level courses provide students with the knowledge, skill, and judgment necessary to practice as advocates and counselors and to develop innovative and ethical solutions to business problems.

### ANTITRUST

A global economy demands lawyers trained in a solid understanding of the laws and regulations that focus on restrictive trade and competition between businesses, predatory practices by market-dominant firms and oversight of mergers and acquisitions of large corporations. Penn State has one of the deepest concentrations of antitrust scholars that exist at any American law school.

### LAW AND INTERNATIONAL AFFAIRS

Penn State Law is unique in its curricular integration with the graduate School of International Affairs. Students benefit from the unmatched depth in international law and affairs of our two faculties and array of classes. Top law practice today requires a knowledge of the rules and practices that govern transnational affairs, and there is no place better than Penn State Law to gain that knowledge.

### ENERGY LAW & POLICY

Penn State Law's energy law and policy field of study comprises the core of the environmental law offerings. Courses are broadly based, and designed to teach students to approach the law of energy policy with consideration for its multi-disciplinary and international nature.

## ADDITIONAL FOCUS AREAS:

### ADVOCACY AND LITIGATION

Effective advocacy requires a robust knowledge of the law. Even the sharpest legal minds will not win if they cannot successfully advocate their clients' positions. LLM students at Penn State Law learn basic legal communication skills through Legal Analysis Writing and Research and build upon these skills in other courses.

### CONSTITUTIONAL AND ADMINISTRATIVE LAW

Few areas of the law are as pervasive as constitutional and administrative law. Penn State Law students interested in this field of study will explore some of the most controversial and important issues facing the United States today.

### LABOR AND EMPLOYMENT LAW

Labor and employment law explores the legal regulation of employment relationships. The labor and employment law curriculum prepares students to represent a wide variety of clients including labor unions, employees, and employers in both public and private sectors.

### LAND USE AND ENVIRONMENTAL LAW

From zoning authorities to climate-change concerns, students at Penn State Law are offered an array of courses designed to expose them to the complexities of environmental law practice.

### PUBLIC INTEREST LAW

Penn State Law's public interest law curriculum affords students training in the substance and skills necessary to advocate the civil, political, and economic rights of individuals on a national and international scale.

### SCIENCE AND TECHNOLOGY LAW

The intersection of law with science and technology presents a broad range of professional opportunities and challenges. This field includes intellectual property law, regulation of scientific processes, health care law, forensic science, agricultural and environmental science, legal applications of genetic and statistical information, Internet and cyber law, and science-related ethical issues. Students with a scientific background can interact with colleagues from University science and technology disciplines in courses and research.



## LEGAL ENGLISH

Our LL.M. program helps non-native speakers of English attain the high level of legal English language proficiency required in today's global legal practice. Both before the start of the LL.M. program and throughout the LL.M. year, students can build important communication skills for the practice of law.

### **LEGAL ENGLISH COMMUNICATION COURSE**

To prepare for the LL.M. year, many students enroll in the optional, three-week legal English communication course designed to help non-native English speakers build language and academic skills needed for success in a rigorous U.S. law school program. Students will strengthen their abilities to:

- actively participate in classroom discussions;
- understand U.S. legal materials; and
- write in a clear and effective legal context.

### **RECORDED CLASSES**

Every single class at Penn State Law is video recorded. LL.M. students are granted access to the recordings and other class materials, like PowerPoint slides, that allow them to review materials more thoroughly in preparation for exams.

### **ADDITIONAL COMMUNICATION SKILLS TRAINING**

Lawyers are communicators. Penn State Law's LL.M. program is designed to help our students build the writing and common law analysis skills needed to communicate effectively in English to clients, judges, and other lawyers. We offer specific resources especially tailored for the LL.M. students' needs, including:

- Intensive analysis, writing, and research courses;
- Writing and Communication Lab;
- LL.M. Workshop Series;
- Conversation Partner Program;
- Conversation Lunches; and
- Individual consultation with a language specialist.

## FACULTY SCHOLARS

**VICTOR C. ROMERO**  
Maureen B. Cavanaugh  
Distinguished Faculty  
Scholar and Professor of  
Law



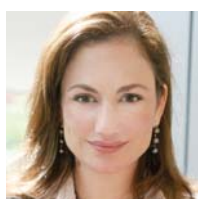
Students in the LL.M. program have access to our complete roster of distinguished faculty — many of them renowned throughout the world for their scholarship and expertise in areas of specific interest to international lawyers. Our faculty members are sensitive to the needs of international students and value the unique perspectives lawyers from other jurisdictions bring to the study of law. Our faculty ensures that your experience is rigorous and engaging and welcomes the opportunity to interact and advise you. Here is a small selection of faculty members who have worked closely with our LL.M. community:



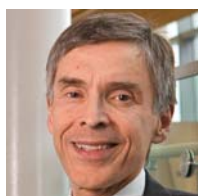
**SAMUEL C. THOMPSON JR.**  
Director, Center for the Study of Mergers and Acquisitions; Corporate and international tax, corporate governance, and antitrust scholar



**THOMAS E. CARBONNEAU**  
Director, Penn State's Institute of Arbitration Law and Practice; international and domestic arbitration scholar



**CATHERINE A. ROGERS**  
Joint appointment as Professor of Law Universita Commercial Luigi Bocconi, Milan, Italy; scholar of international arbitration and professional ethics

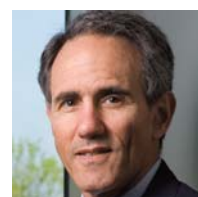


**JOHN E. LOPATKA**  
Antitrust, economic analysis of law, and torts scholar

**RANDALL ROBINSON**  
Acclaimed human rights advocate and author with interests in U.S. foreign policy towards the Caribbean and Africa; the use of foreign policy to achieve social goals; and racial equity



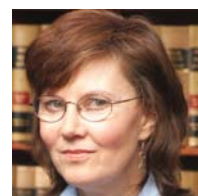
**DAVID H. KAYE**  
Legal expert on DNA and other forms of scientific evidence



**PANAGIOTIS TAKIS TRIDIMAS**  
Joint appointment as the Sir John Lubbock Professor of Banking Law, University of London's Queen Mary College; financial services law and European Union law scholar



**EILEEN M. KANE**  
Holds a Ph.D. in molecular biology; biotechnology, Internet and patent law scholar





## MENTORING/ ALUMNI

### J.D./LL.M. MENTORING PROGRAM

Through the mentoring program, LL.M. students are paired with J.D. students who become campus mentors and in many cases life-long friends. It is one of the defining experiences of the Penn State Law LL.M. program. LL.M. students are able to get advice on cultural issues and ask questions about classroom and study practices. J.D. students welcome the opportunity to get to know LL.M. students coming from another part of the world and better understand their experiences. Each year the students travel together to Washington, D.C. to visit the U.S. Supreme Court to hear oral arguments.

### ALUMNI

Graduates of Penn State Law enjoy access to the Penn State Alumni Association, the largest dues-paying alumni organization in the world, with more than 557,000 living members around the globe and chapters in places like London, Beijing, Hong Kong, Brazil, Thailand, Taiwan, and Tokyo.

### *Meet a few of our Alumni*

Franklin Briceño Salazar '93  
Senior Partner  
Sucre, Briceño & Co.  
Panama

Jorge De Presno-Arizpe '88  
Basham, Ringe y Correa  
Mexico City, Mexico

Sakina Ibrahimova '10  
Senior Tax Consultant  
Pricewaterhouse Coopers  
Azerbaijan

Alberto Imberton '01  
Attorney and Counsellor-at-Law  
Enel Green Power  
El Salvador

Jennifer Liu '05  
Associate General Counsel  
Asia at Cooper Industries, Ltd.  
Shanghai

Emily Lombardi '11  
Associate  
Chiomenti Studio Legale  
New York, NY

Andrés Portilla '99  
Director  
Regulatory Affairs Department  
Institute of International Finance  
Washington, DC

Heiko Schiwek '96  
Counsel  
Shearman & Sterling LLP  
New York, NY

Manmeet Singh '10  
Legal Fellow  
International Civil and Human  
Rights Advocacy (ICHRA)  
New York, NY

Marion Welp '98  
Sr. Vice President  
Head of Group Legal & Compliance  
Esprit  
Cologne, Germany



# CAREER PLANNING & DEVELOPMENT



## **CAREER PLANNING AND DEVELOPMENT**

LL.M. students can work with a career services professional who provides guidance on the U.S. and global legal employment market. Specializing in helping students identify their interests and strengths, the career professionals at Penn State Law are dedicated to connecting students to the resources and knowledge they need to find legal positions.

## **S.J.D. PROGRAM**

The Penn State Law S.J.D. (Doctor of Juridical Science) degree is intended for lawyers and scholars practicing outside of the U.S. who seek advanced and specialized knowledge in a particular area of law. The course of study required for the degree offers students with outstanding academic or professional credentials an opportunity to pursue sustained, supervised study, and research and writing leading to the production of a dissertation that makes an original and valuable contribution to legal scholarship. Because of the academic rigor of this program, Penn State Law expects that only two or three select candidates will be enrolled in the S.J.D. program each year.

## **OPTION TO TRANSFER TO THE J.D.**

We allow select LL.M. candidates to transfer to the J.D. degree program. Criteria for transferring to the J.D. program is set by the Dean of Admissions and Associate Dean for Academic Affairs. Important factors are excellent English language skills and strong performance in classes taken at Penn State Law. LL.M. candidates interested in this path should work closely with the Penn State Law faculty advisors to choose courses and build their academic program accordingly.



"Penn State Law was the perfect placement for me because it corresponds to my interests. It's a highly reputable university with many distinguished professors in various legal fields. Two of the classes that I enjoyed most were U.S. Law of Arbitration with Professor Thomas Carbonneau and International Law with Russian legal expert Professor William Butler."

— Marina Volkova '12  
Russia





"Penn State has a very diverse student population. When I came, I was quite surprised to see that there are people from almost everywhere. We have someone from Saudi Arabia. We have someone from Ghana. We have someone from China, and we have someone from Thailand. The world has about five legal systems, and I have all of them in my class. That's the beauty of the class. It's diverse."

— Urbain Jiggi '12  
Cameroon





## BAR PREPARATION

Many LL.M. students have the goal of passing a U.S. state bar exam, and we have designed our LL.M. program with that goal in mind. Although for long-term employment in the U.S., a J.D. is essential, the Penn State Law LL.M. program provides students with the curriculum necessary to understand the U.S. legal system at a high level. A student interested in sitting for a bar exam has the freedom to select from a wide array of courses covering all aspects of the American legal system.

Faculty members familiar with the bar exam are available to meet with students to provide academic counseling and help design a course of study. We allow students to take courses that prepare them for the bar. Because fluency in legal English is so important, we provide many opportunities for enhancing communication skills.

### **THIRD SEMESTER OPTION**

A select number of LL.M. students at Penn State Law apply to stay an additional semester. During this final, third semester, students take more bar related courses and begin intensive study for the bar exam.

Another benefit of the third semester option is that some students are able to find research positions with law professors or other internship opportunities over the summer between the second and third semester that allows them to gain valuable practical experience.



# TECHNOLOGY / INTERDISCIPLINARY



## **TECHNOLOGY**

Penn State University has invested more than \$130 million in new facilities over the past six years to give its law students a significant advantage. Our facilities have been called “state-of-the-art” because of our technology. Every single class at Penn State Law is video recorded. LL.M. students are granted access to the recordings and other class materials like PowerPoint slides. In our courtroom, students were able to observe a third circuit judge hear and rule on a last minute death penalty appeal. In our classrooms, students compare constitutional issues with their peers in Canada or Australia. In our library, students have 24/7 access to a vast collection of resources. Plus our technology allows students to interview with employers all over the world.

## **INTERDISCIPLINARY OPPORTUNITIES**

LL.M. students have the opportunity for interdisciplinary collaboration and study with other Penn State graduate schools including the top-ranked Smeal College of Business, the Eberly College of Science, and the School of International Affairs.

## **LAW AND INTERNATIONAL AFFAIRS**

The School of International Affairs offers a host of international law and international affairs classes taught by renowned comparative law specialists, former ambassadors, and former high officials of the United Nations. Penn State Law regularly partners with the School of International Affairs to host lectures and events covering key issues in law and international affairs designed to support careers in international organizations where politics and law intersect.



## APPLICATION / SCHOLARSHIPS

### **APPLICATION FOR LL.M. ADMISSION**

The LL.M. Admissions Office reviews applications on an ongoing basis. While most students seek to enroll in the fall, Penn State Law does offer the option of beginning the LL.M. program in the spring semester (January).

For an application to be considered complete, the LL.M. Admissions Office must receive the following materials:

- A completed application and fee
- Transcripts from all relevant academic institutions attended
- An English proficiency score  
(88 on TOEFL or 6.5 on IELTS-minimum requirements)
- A personal statement
- A resume
- Two letters of recommendation

Forms and complete application details are available on our website at <http://law.psu.edu/llm/apply>.

### **SCHOLARSHIP OPPORTUNITIES**

Penn State Law awards merit-based scholarships to outstanding LL.M. applicants. Typical awards range in size from \$3,000 to \$8,000 U.S. All applicants are considered for merit-based scholarships and no separate scholarship form is required. Please contact our Admissions Office for a list of possible outside funding sources.

## SAFE COMMUNITY



Penn State University is consistently ranked among the top research and teaching institutions in the world according to the *Times Higher Education* and the *Institute of International Education*. Home to more than 44,000 students and 5,000 international scholars, University Park offers a diverse intellectual community and vast opportunities for LL.M. students to engage in scholarly activities within the Law School and throughout the University community. In addition to extensive scholarly programs, the school is home to some of the most venerated sports teams in the U.S.

State College is consistently ranked as a top place to live in the United States because of its low crime rate, outstanding cultural activities, and wide variety of outdoors activities. *Congressional Quarterly* ranks the State College metropolitan area as the second safest in the country. Penn State is located within easy driving distance of Baltimore, Washington, D.C., Philadelphia, Pittsburgh, and New York City, but is a much less expensive city so you can enjoy a year of reasonable rent and a manageable cost of living. You can walk, jog, or bike to class or take the excellent public bus system. State College is often said to have the amenities of a larger urban area but has a small-town feel.



### Driving Distances from University Park, PA:

- To Carlisle, PA – 2 hours
- To Baltimore, MD – 3 hours
- To Philadelphia, PA – 3.5 hours
- To New York City, NY – 4 hours
- To Washington, DC – 4 hours





Office of Admissions • Lewis Katz Building, University Park, PA 16802 • 1+814.865.8900 • [law.psu.edu/llm](http://law.psu.edu/llm)